

COMP 1100 Homework 04 – Relational Model

Name _____

Date _____

- (10 points) The ER schema below represents a database application that tracks transport ships and their locations for maritime authorities. Map this diagram into relational database tables. Specify all tables, attributes, primary keys and foreign keys. Keep in mind that when mapping weak entities to relations, you must include ALL of the weak entity's primary key as a foreign key. Also *make sure you identify the weak entity's identifying relationship correctly*. Your best strategy for mapping weak entities is to create all of the strong entity relations FIRST, then work through *identifying relationships* to the closest weak entity, and work outward from there. Review the course notes on ER Models and Relation Models.

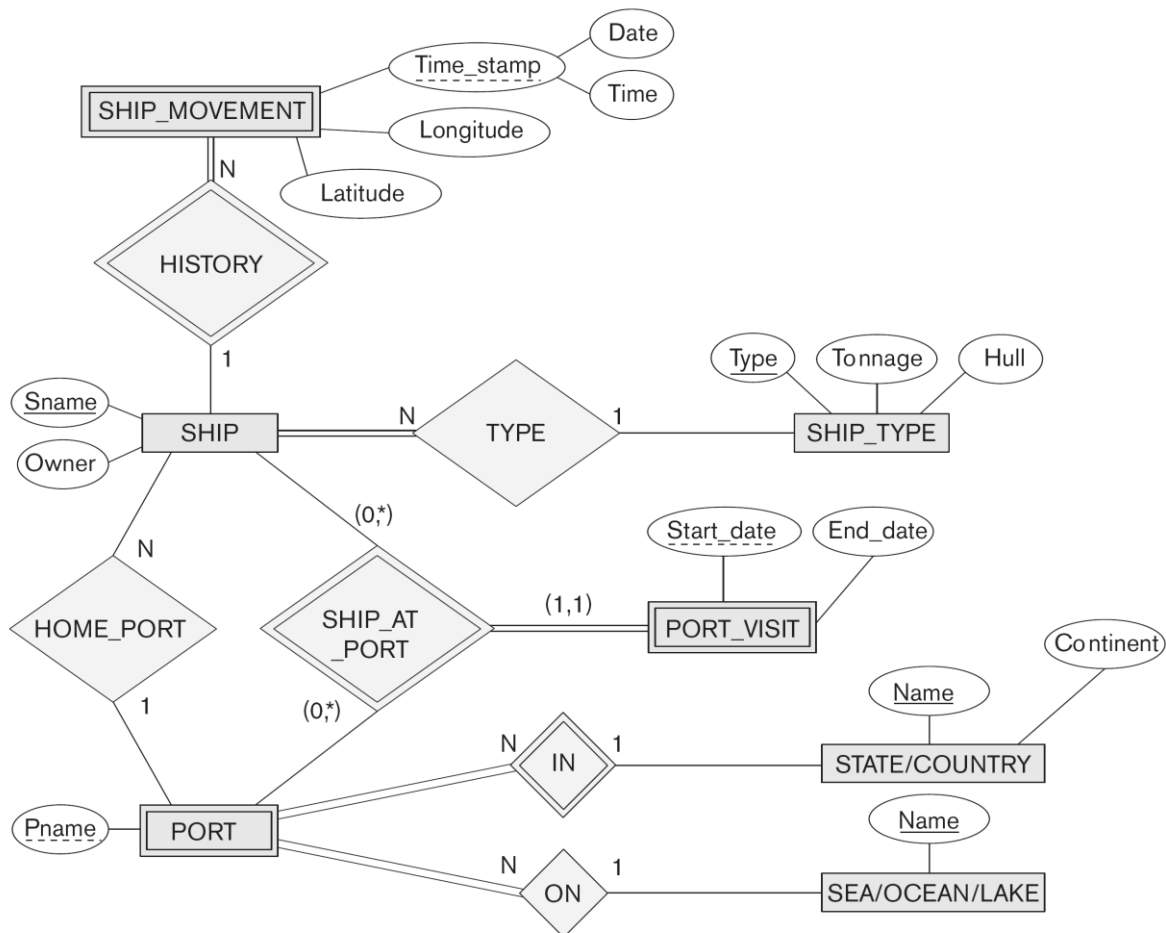


Figure 9.8

An ER schema for a SHIP_TRACKING database.